

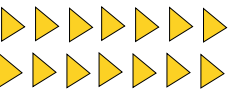
NEWSLETTER



Hope in Action: Stories of Recovery, Resilience, and Renewal

This season, we're excited to share the incredible progress your support has made possible. From bridge construction in remote areas, to special deliveries and helping families return home with dignity. You'll also meet some of the unsung heroes, volunteers, case managers, and partners who make this all possible every single day. Thank you for being a part of the HopeMill family. We couldn't do this without you!

With gratitude,
The HopeMill Team



STAY CONNECTED



<https://hopemill.org>



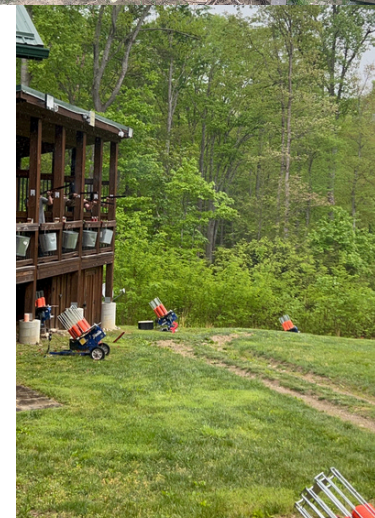
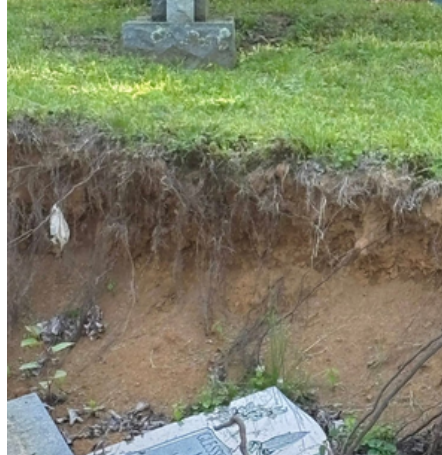
@hopemillorg



info@hopemill.org



<https://hopemill.org/hurricane-helene-donations/>



IN PROGRESS & ON THE HORIZON



FROM LOSS TO RESTORATION

HopeMill is partnering with county officials and local nonprofits this summer to work on a unique recovery project in **Yancey County**. We met Haley and her family after her grandpa reached out asking for help. Their home was destroyed by the **Cane River** during Hurricane Helene. When we arrived what stood out the most were all the **tombstones, vaults, and exposed caskets**. A privately owned family cemetery had washed into their front yard when it was flooded during the storm.



Inside their home black mold had taken over and it was unsafe to live in. Haley was doing her best to take care of her family. ***"I've been trying to tell people what happened here, and they all look at me like I'm insane."*** For months, her family had been hiking three miles in through the mountains just to deliver supplies and clean up while the road was being built back.

We have connected with several family members of those buried in the cemetery to begin mapping out the existing burial plots. The majority of tombstones here will need to be placed back in their original plots, while others laid to rest here will have to be reburied. These were parents, veterans, grandparents, and preachers who deserve the respect of a peaceful final resting place. Our goal is to help rebuild a home for Haley's family and facilitate the **restoration** of this private cemetery. With your support, we can bring peace and stability back to those who have lost so much.



Ways To Help

- By visiting [HopeMill.org](https://www.HopeMill.org) and donating to **Haley's Campaign** you will be assisting with funding a **new single-wide trailer home, purchasing replacement tombstones, caskets, restoration services, and landscaping** for the cemetery.
- Organization willing to provide **in-kind services**
- Volunteer **consulting**




PHASE 1: DEMOLITION COMPLETE

The family of 6 is one step closer to a safe, mold-free home and out of the camper! Huge thanks to our amazing volunteers, **Project Skyline**, and to **Blue Ridge Waste & Willow Dumpsters** for donating dumpsters. Stay tuned for the next phases!


GET INVOLVED: EVENTS & GIVING OPPORTUNITIES

- **June 6th**– Mennel's Biscuit Day Community Outreach Event, Downtown Newton, NC from 8am–11am
- **July 4th** – Drawing for our 1980 Scottsdale Edition Chevy 1500 Pickup Truck Raffle
- **July 31st**– Camp Linn Haven's Back to School Bash, Newland, NC
- **October 4th**– Downtown Catawba WNC Benefit Concert
- **November Date TBA**–HopeMill's 2nd Annual Winter Gala



CAMP LINN HAVEN'S BACK-TO-SCHOOL BASH & BACKPACK PROGRAM

PARTNERED WITH



SCHOOL SUPPLIES NEEDED

SUPPLIES
COLLECTED THRU
JULY 1ST

Inquiring children K-12 receive a new backpack and school supplies in Avery, Mitchell, and Yancey County Schools


- | | |
|--|--|
| <ul style="list-style-type: none"> • PENCIL POUCHES • PENCIL BOXES • PENCILS • PENCIL SHARPENERS • MECHANICAL PENCILS • BIG PINK ERASERS • PENCIL TOP ERASERS • CRAYOLA CRAYONS • COLORED PENCILS • WASHABLE BROAD LINE MARKERS • FINE TIP MARKERS • GLUE STICKS • BLUNT TIP 5" SCISSORS • 7" SCISSORS • PENS • HIGHLIGHTERS | <ul style="list-style-type: none"> • LOOSE LEAF PAPER • COMPOSITION NOTEBOOKS (WIDE RULED) • ONE SUBJECT SPIRAL BOUND NOTEBOOK (WIDE RULED) • LOOSE LEAF PAPER (COLLEGE RULED) • COMPOSITION NOTEBOOKS (COLLEGE RULED) • SUBJECT NOTEBOOKS (COLLEGE RULED) • SUBJECT SPIRAL BOUND NOTEBOOK (COLLEGE RULED) • INDEX CARDS • 1 INCH BINDERS • 1.5 INCH BINDERS • 2 INCH BINDERS • DIVIDERS • 2 POCKET FOLDERS • DATELESS AGENDAS |
|--|--|

SUPPLY DROP-OFF LOCATIONS:

 **LKN CHEESECAKERY LOCATIONS**
~107 COURT SQUARE LINCOLNTON
~278 N. BUSINESS 16 DENVER

 **UNIFOUR FLORAL WHOLESALE**
935 3RD AVENUE SE #104, HICKORY

 **UNIFOUR HYDRAULICS-LENIOR**
1002 CONNELLY SPRINGS RD, LENIOR

 **ST. JOHN'S LUTHERAN CHURCH**
2126 ST JOHNS CHURCH RD NE, CONOVER
TOWN HALL OF CATAWBA
102 1ST ST NW, CATAWBA, NC 28609

EVERY YEAR CAMP LINN HAVEN LOCATED IN NEWLAND, NC RELIES ON FINANCIAL SUPPORT AND DONATIONS TO BE ABLE TO PROVIDE STUDENTS ACROSS AVERY COUNTY WITH NECESSARY SCHOOL SUPPLIES DURING THEIR TEEN SERVANT WEEK PROJECT.

IN THE AFTERMATH OF HURRICANE HELENE THE STUDENTS OF WNC NEED OUR HELP MORE THAN EVER. OUR GOAL THIS YEAR IS TO PARTNER WITH CAMP LINN HAVEN TO SUPPORT LOCAL YOUTH WITHIN AVERY, MITCHELL AND YANCEY COUNTIES.

WOULD RATHER ONLINE SHOP? WE HAVE AN AMAZON WISHLIST!



HopeMill Resilience Scholarship: Supporting students whose education has been disrupted by Hurricane Helene.

Eligibility: Applicants must reside in an affected state, be enrolled in an accredited college or trade school, and demonstrate financial need due to storm-related hardships.

HIGHLIGHT STORIES

BRIDGE REBUILT, HOPE RESTORED

What started as a best-case scenario quickly became a challenge—relentless rain, red tape, and logistical hurdles turned this bridge project into a true test of resilience. But thanks to the incredible team at **Wilson's Land Solutions**, the job was completed—and then some.

One of the most powerful moments came when the homeowner, a widower, screwed in the final bolt. For months, he had to drive through a creek to reach his home after his original bridge was destroyed by Hurricane Helene. Like many in rural WNC, he relies on a private bridge—yet he was denied assistance multiple times.

Because of your donations, HopeMill was able to step in. We provided him with safe, reliable access to his property—without the crushing financial burden of a costly rebuild.



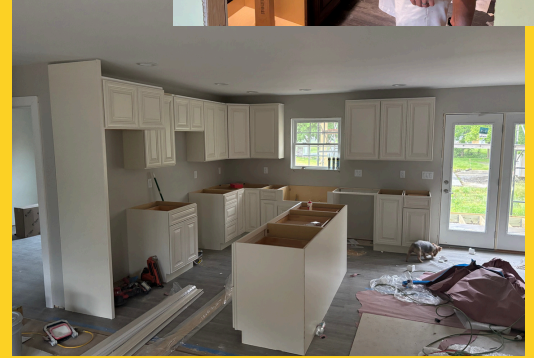
MOWING FORWARD

When Hurricane Helene's floodwaters hit **Pensacola, NC**, Regina's home was swept off its foundation, and like many of her belongings, her lawn mower was destroyed and covered in mud. A friend reached out to let us know she needed one—and we were honored to help.

Regina recently lost her father, who lived next door. Now, in addition to caring for her own property, she tends to her recently widowed mother's yard as well. Always looking out for others, Regina gives so much to those around her. Thanks to your support, we were able to give a little back to someone who gives so much.

CABINETS WITH A CAUSE

HopeMill was proud to support **Cabinets4Christ.com**, a small South Carolina nonprofit, by donating much-needed cabinets. These are now being installed in two homes in **Hampton, TN**, both severely damaged by Hurricane Helene's flooding. By supplying these cabinets, we helped ensure there was no pause in the process of getting displaced families back into their homes quickly.



HOW YOU CAN HELP

PURCHASE A RAFFLE TICKET

Enter to win a 1980 Scottsdale Edition Chevy 1500 Pickup Truck!

- Tickets are \$100 – Support a great cause and get a shot at an incredible vintage ride.

Online Ticket Sales: <https://www.zeffy.com/ticketing/hopemill-1980-chevy-1500-raffle>

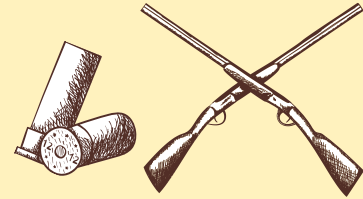
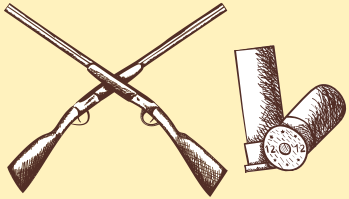


OTHER WAYS

- Monetary **donations**
- Volunteers skilled in **restoration** home building, and construction
- **Grant** Writers

If you would like to volunteer or apply as a grant writer, please reach out to info@hopemill.org

Thank you for standing with us. Your kindness is rebuilding lives, one step at a time.



HopeMill hosted a successful **First Annual Clay Shoot** at **Chetola Sporting Reserve**, raising over \$10,000 to support our mission. A huge thank you to our generous sponsors: **CarolinaBUILT, LCC, Premier Land, Jamie Lineberger, HIGHSTREET Insurance & Financial Services, Inter-Continental Corporation, Mike Mozee, and Baker Construction** for making this event possible!

